

**AUSTRALIA'S
PERFORATED
METAL EXPERTS**

arrowmetal

arrowmetal.com.au

Perforated Metal



CONTENTS

4....About Arrow Metal

6....Perforated Metal Applications

8....Metals & Designs

10...Finishes & Special Effects

12...Bespoke Design Services

16... Our Recent Projects

18...Perforated Metal Catalogue

30...Perforated Metal Specification

Bring your ideas to life with Arrow Metal perforated panels ❖

CREATIVE PERFORATED METAL SOLUTIONS FOR EVERY PROJECT

We design, manufacture, and supply perforated metal to architects, builders, contractors, and designers.



Manufactured at our factory in Silverwater, New South Wales, our perforated metal is used for public and private sector projects across Australia, from multimillion-dollar CBD developments and residential complexes to transport hubs, award-winning education institutions, leisure centres, parks, and shopping centres.

A leading choice for architects & designers

With nearly three decades of metal perforation expertise, Arrow Metal has the technology and know-how to create perforated metal for every type of project and tender brief.

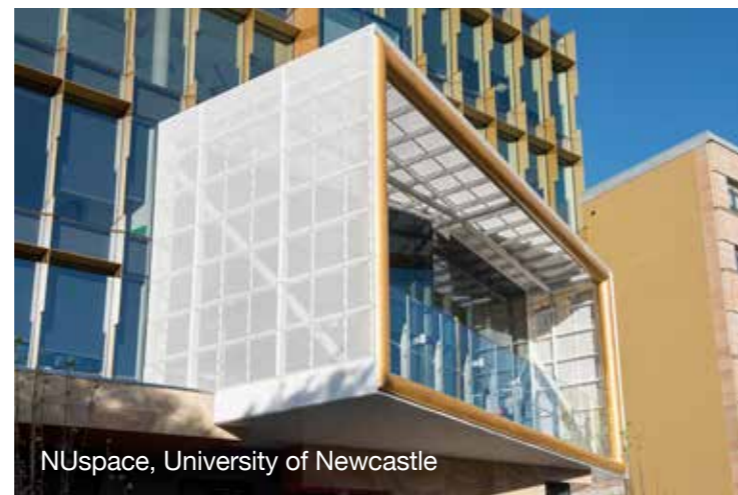
We work across all Australian architecture and design sectors, partnering with:

- Small to large-scale architecture studios and practices
- Building and construction companies
- Project managers
- Specifiers
- Fit-out firms
- Trade specialists – balustrade, metal fabricators, and facade installers
- Interior designers
- Artists and creative professionals



Applications

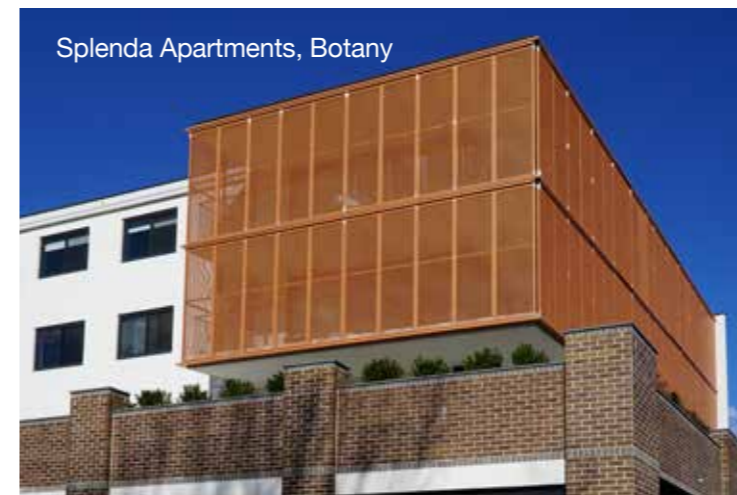
Sunbury Aquatic Centre



NUspace, University of Newcastle



Residential Home, Balmain



Splenda Apartments, Botany



Canterbury South Public School

Perforated metal is used for all types of interior and exterior installations:

- Architectural facades
- Fencing
- Balustrade and staircases
- Solar shading
- Privacy panels
- Balcony screens
- Acoustic sound barriers
- Ventilation
- Machine guarding
- Room dividers
- Ceiling panels
- Decorative panels
- Green walls

FROM ENQUIRY TO PROJECT SUCCESS

Exceptional customer support is part of the Arrow Metal service, providing help and guidance at every stage.



Expert advice

Explore pattern options, metals, and finishes with our metal experts. We can advise on solutions to meet tender briefs, pitches, and more.



Detailed quotes

Receive a comprehensive, fully costed quote for your panels, including delivery timescales. We will keep you updated on order progression.



Changes & alterations

If project specification changes mid-job, we will make all the necessary alterations to your design to ensure your panels perform.



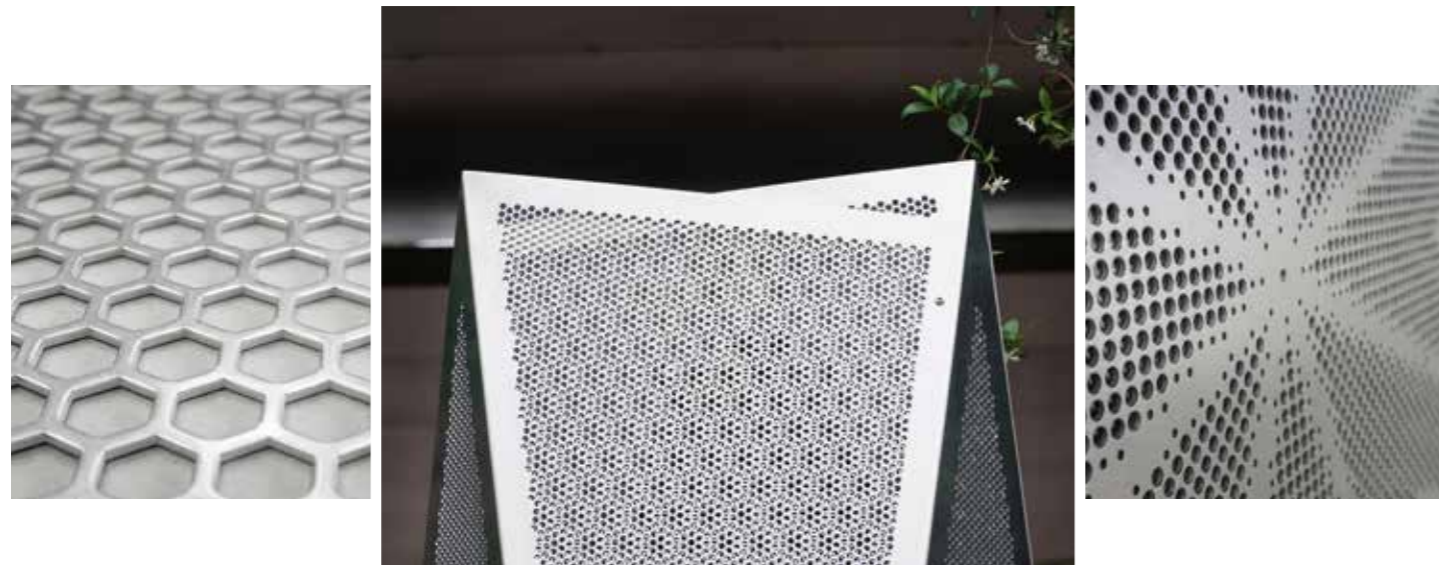
Ready-to-install

Your finished panels are quality checked by hand and delivered direct to site, precision cut to size and ready to fit.

METALS & DESIGNS

Perforated metal is our speciality

Our state-of-the-art punching machines can create almost limitless panel patterns. Whether you are using perforated metal for energy-saving benefits, sound or thermal control, lighting effects, or visual impact, we have a perforated metal solution for all budgets and timescales, from standard profiles to made-to-order patterns and unique custom designs.



Patterns & Designs

We have an extensive range of perforated patterns, from traditional shapes to exclusive architectural designs hand-drawn by our team. All made-to-order patterns can be customised to your exact project specifications. Design choices include:

- **Classic shapes:** Round, square, round-end slot, and rectangle
- **Geometrics:** Hexagons, slanted squares, polygons, grids, checkerboards
- **Multi-designs:** Mix-and-match hole sizes on a single panel
- **3D designs:** Reverse raised perforated metal for tactile surfaces
- **Customisable collection:** Designs can be adjusted to meet your exact needs, with complete control over hole sizes, open area, and pattern size
- **Bespoke design:** A complete custom perforated metal design service, for architectural designs, images, and logos

Choose the metal that suits your project requirements and customise your panels with a selection of finishes.



Metal Options

We perforate the most common types of metal used in architecture and design, available in a range of thicknesses.

- Mild steel
- Pre-galvanised steel
- Galvanneal
- Stainless Steel 304 grade
- Stainless Steel 316 grade
- Aluminium
- Brass

FINISHES & SPECIAL EFFECTS

Enhance and upgrade your perforated panels with a range of finish options



- Colours – powder coating and anodising
- Durable finishes for weather resistance and longevity
- Metallic effects
- Folding, bending, or curving – depending on pattern specification
- Corten steel – known as weathered steel – when exposed to the elements develops the brown coating that protects the metal, ensuring longevity and strength. Made-to-order only.

Finishes can be applied to in-stock standard, made-to-order, and custom-designed panels.



Blacktown Tennis Centre



Lead times range from next-day dispatch for standard in-stock panels to as soon as two to three weeks for made-to-order and custom designs, with the final lead time subject to the scope of the project. We will advise current lead times when you order.

Lead Time



BESPOKE DESIGN SERVICE

Create with PixelPerf image perforation

If you can think it, we can make it. Using our **PixelPerf** technique that features CAD-controlled tooling software, we can produce complex designs in perforated metal without compromising metal performance or functionality.



We can perfectly replicate photographs, drawings, illustrations, graphics, or logos, using combinations of hole sizes to successfully recreate every detail, including shadows, tones, and even facial features.



Archibald Residences

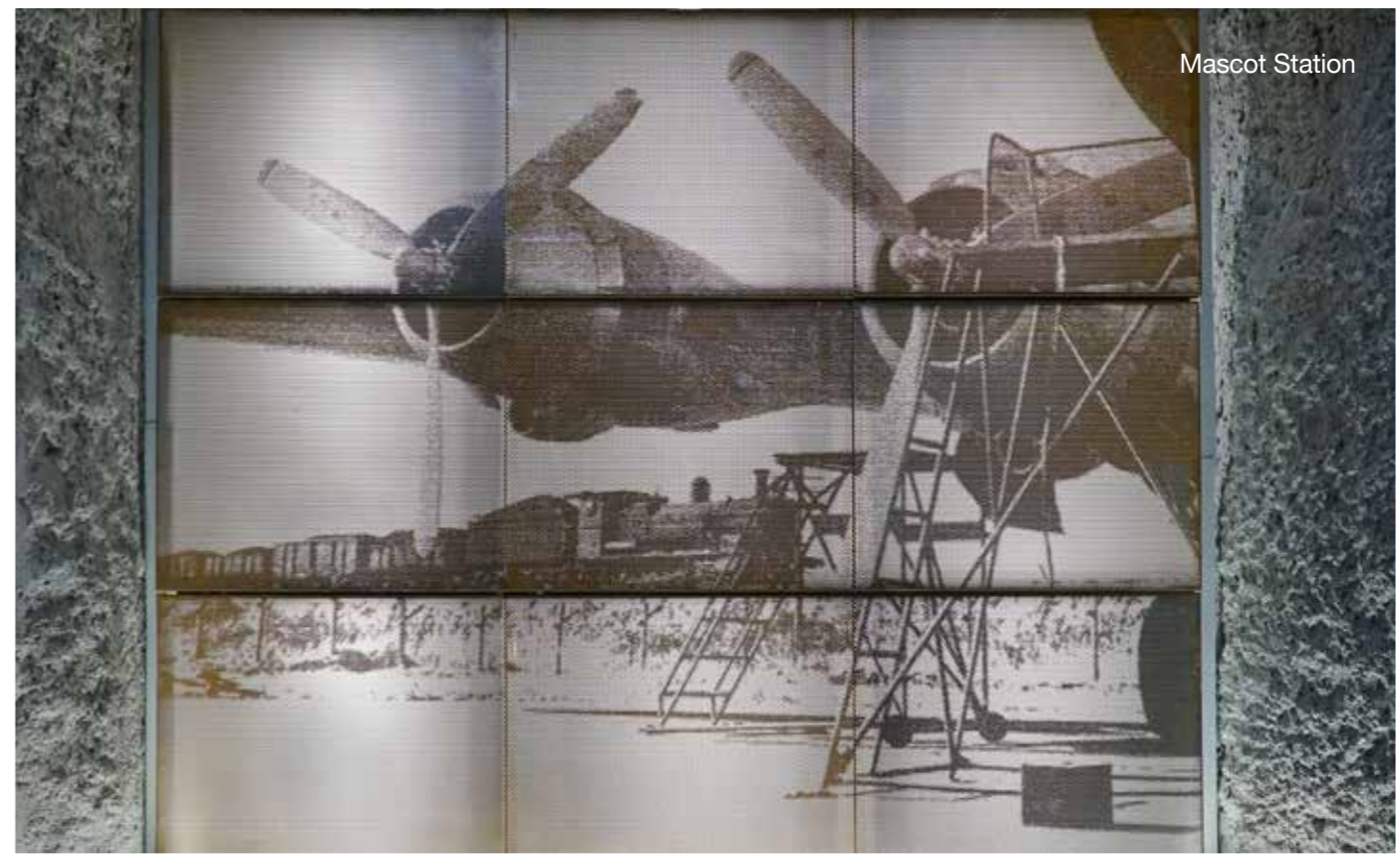


Our design experts work with you throughout production, starting with a review of your concept for performance requirements, with drawings and samples supplied before manufacture for statement designs that always exceed expectations.



Carrington Assisted Living

With PixelPerf the creative opportunities are endless: personalise a project, build on a theme, promote a purpose, or reflect the past with local imagery.



Mascot Station

BESPOKE DESIGN SERVICE

Imagine, collaborate, and create with Arrow Metal



Create a design using your own CAD drawings or images, or why not adapt a pattern from our customisable range?

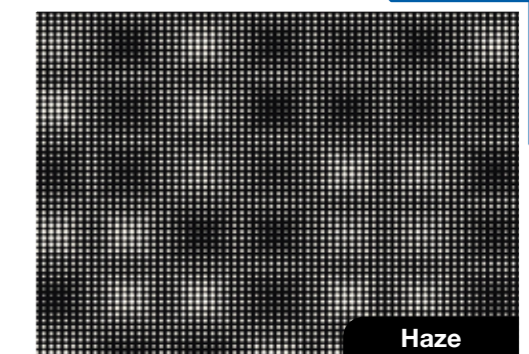
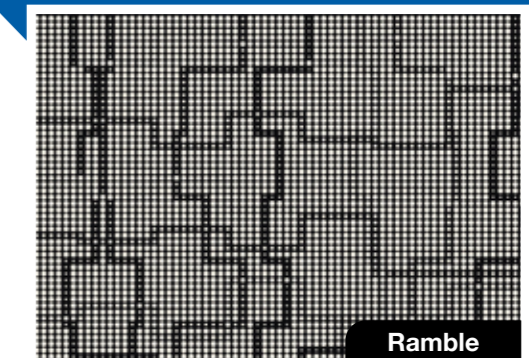
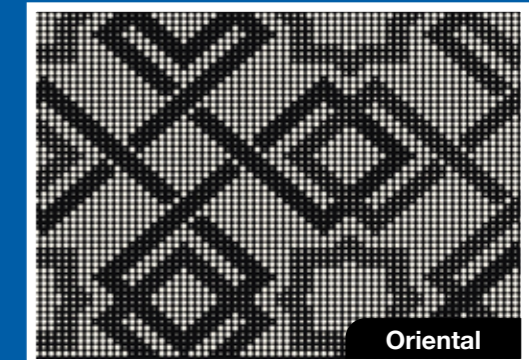
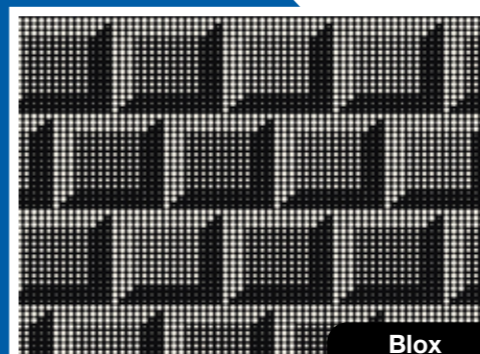
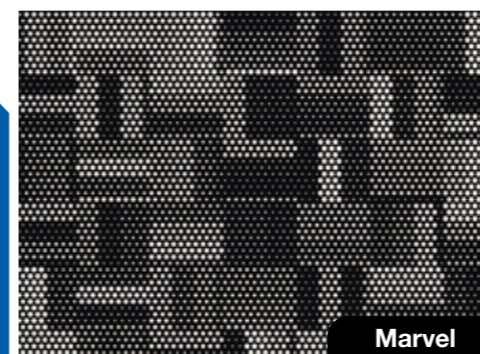
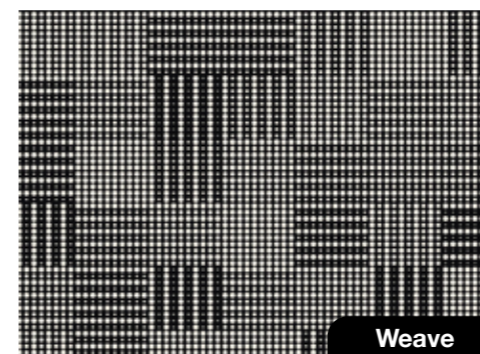
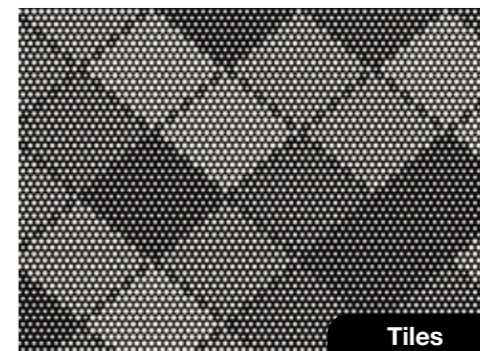
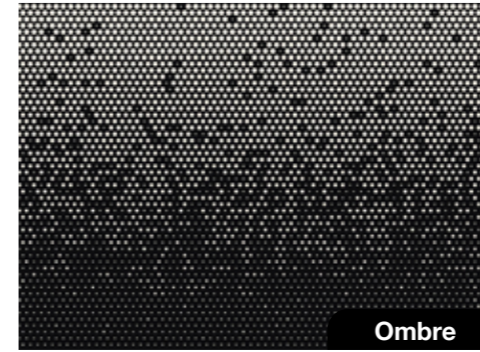


Central Park Mall, Chippendale

Talk to our team to learn more about your bespoke perforated metal design possibilities – there is no limit to its application and appeal. We will advise the most cost-effective way to produce your panels, considering your budget, project timeline, and any panel performance requirements.

Customisable Perforated Metal Collection

An exclusive collection of exotic, geometric, and impactful patterns, factors such as hole size and pattern scale can be adjusted to suit your exact requirements.



OUR RECENT PROJECTS



As a leading Australian perforated metal supplier and manufacturer, we are dedicated to delivering not only outstanding products; but an outstanding service our clients can rely on.



Oxford Falls Grammar School



Waitara Station



Towradgi Station



Unanderra Station

PERFORATED METAL CATALOGUE



WE SHIP AUSTRALIA-WIDE



In-stock standard pattern perforated metal is ready to dispatch, for tight lead times and last-minute project requirements. Place and pay for your order by midday and we will ship it the next working day. Stock standard sheets typically come in the following sizes:

- Stainless steel / Mild steel / Pre-galvanised steel: 2440mm x 1220mm
- Aluminium: 2400mm x 1200mm

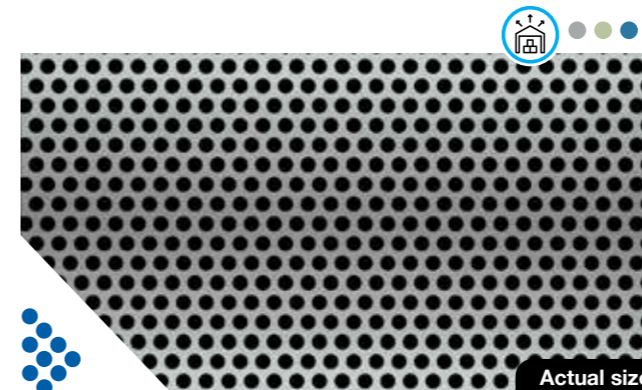


Manufactured-to-order perforated metal offers a wider pattern choice, but with a longer lead time. Contact our team for the latest delivery time frames. Manufactured-to-order sheets can be made up to 5000mm x 1500mm depending on perforated pattern and material.

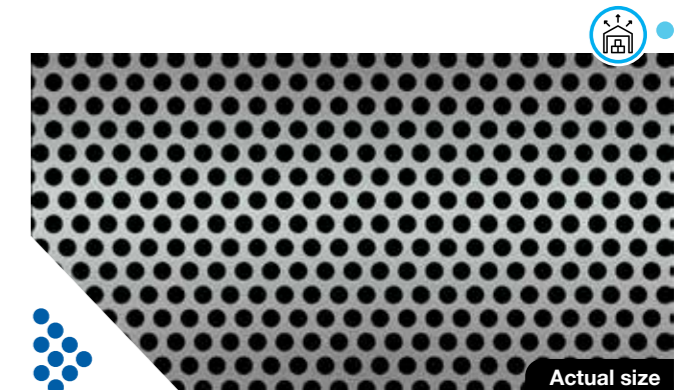


Metals

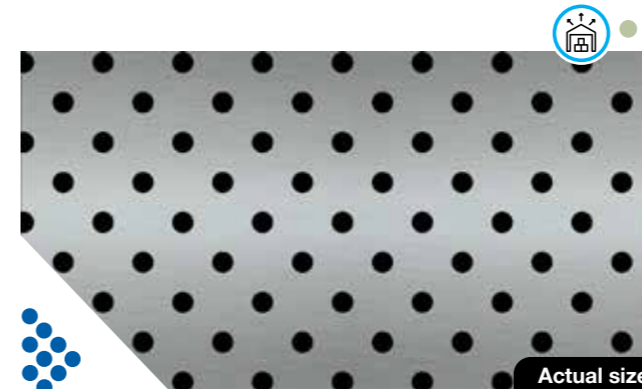
- Mild Steel
- Pre-Galvanised Steel
- Galvanneal
- Stainless Steel Grade 304
- Stainless Steel Grade 316
- Aluminium Grade 5005
- Brass



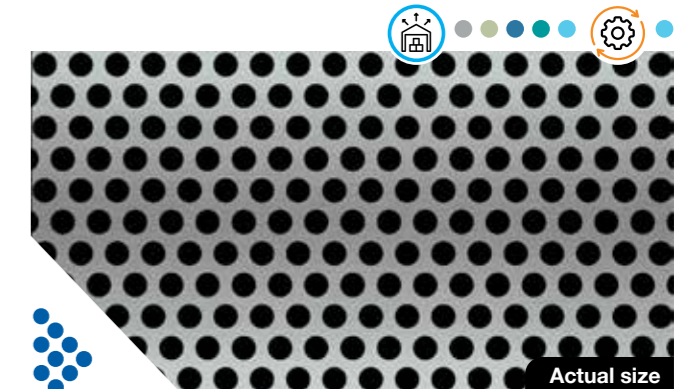
208 | Open area 40%
2.0mm diameter holes x 3.0mm staggered pitch



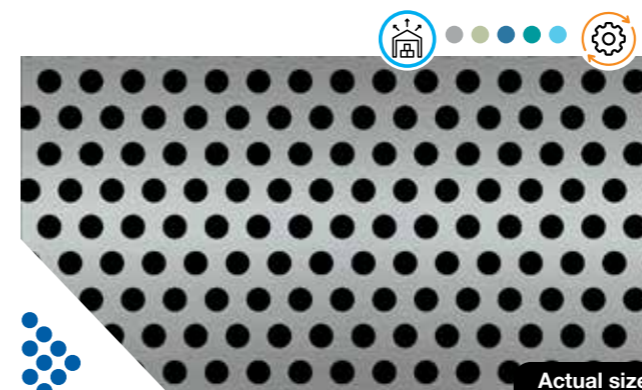
210 | Open area 40%
2.4mm diameter holes x 3.6mm staggered pitch



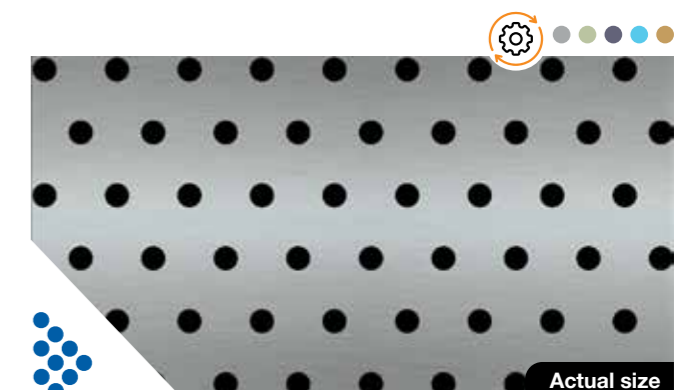
214 | Open area 11%
2.4mm diameter holes x 6.8mm staggered pitch



218 | Open area 40%
3.2mm diameter holes x 4.8mm staggered pitch



220 | Open area 30%
3.2mm diameter holes x 5.6mm staggered pitch



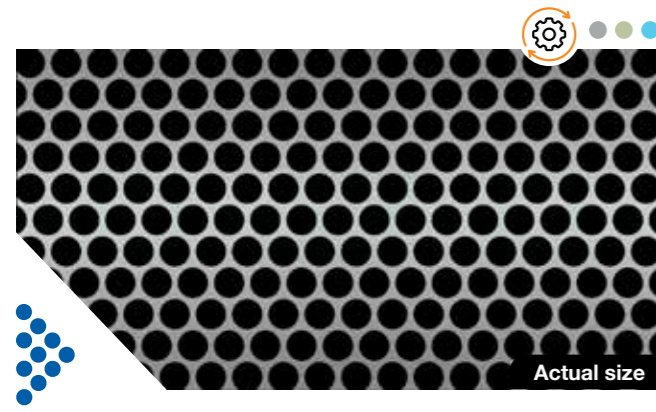
222 | Open area 10%
3.2mm diameter holes x 9.6mm staggered pitch

Perforated Round holes

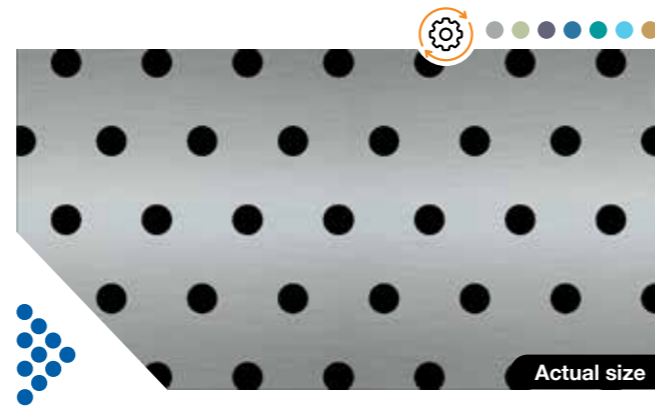
Perforated Round holes

Metals
 Mild Steel
 Pre-Galvanised Steel
 Galvanneal
 Stainless Steel Grade 304
 Stainless Steel Grade 316
 Aluminium Grade 5005
 Brass

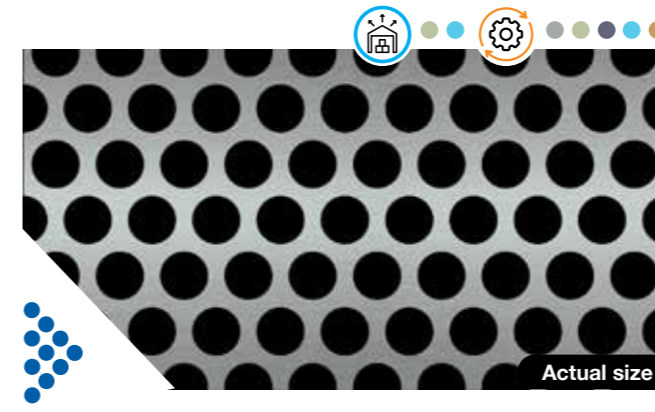
Metals
 Mild Steel
 Pre-Galvanised Steel
 Galvanneal
 Stainless Steel Grade 304
 Stainless Steel Grade 316
 Aluminium Grade 5005
 Brass



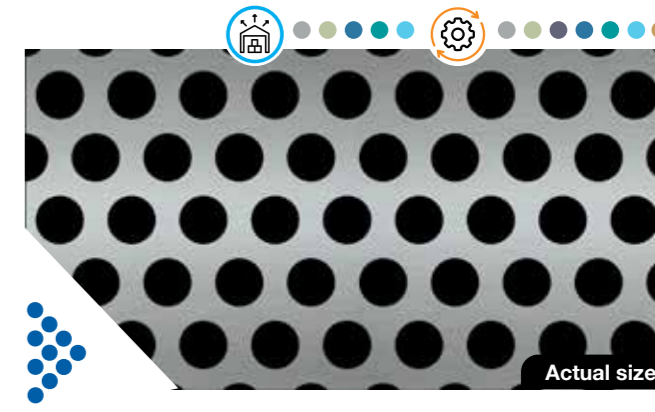
223 | Open area 62%
4.0mm diameter holes x 4.8mm staggered pitch



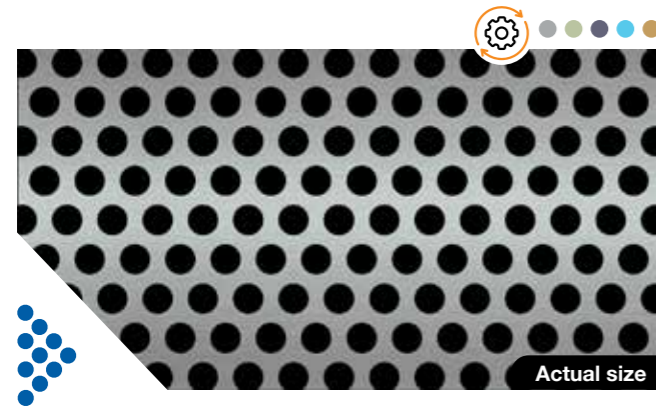
224 | Open area 10%
4.0mm diameter holes x 12.0mm staggered pitch



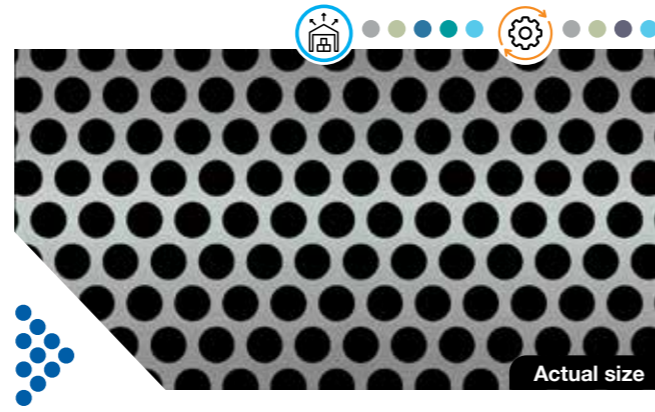
233 | Open area 50%
6.4mm diameter holes x 8.5mm staggered pitch



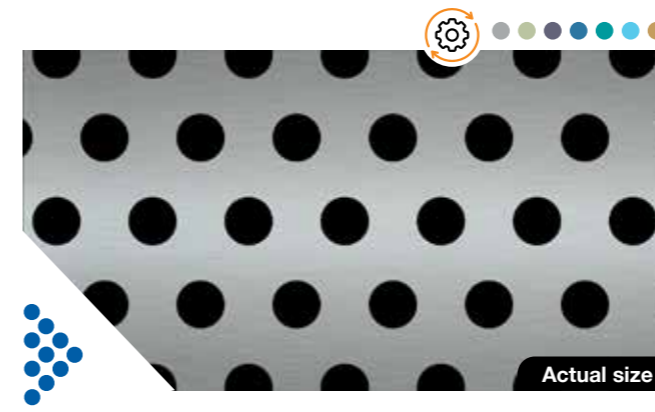
234 | Open area 40%
6.4mm diameter holes x 9.5mm staggered pitch



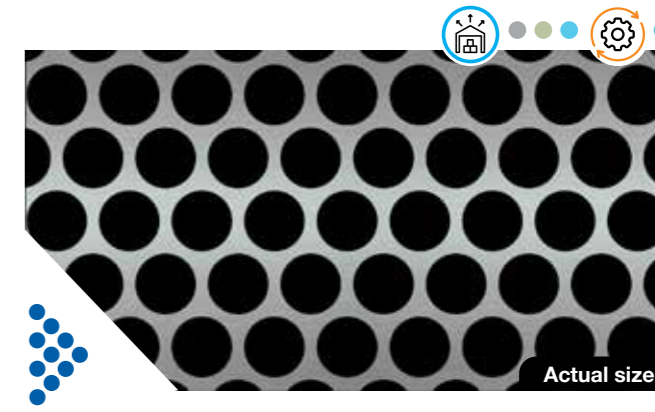
225 | Open area 40%
4.0mm diameter holes x 6.0mm staggered pitch



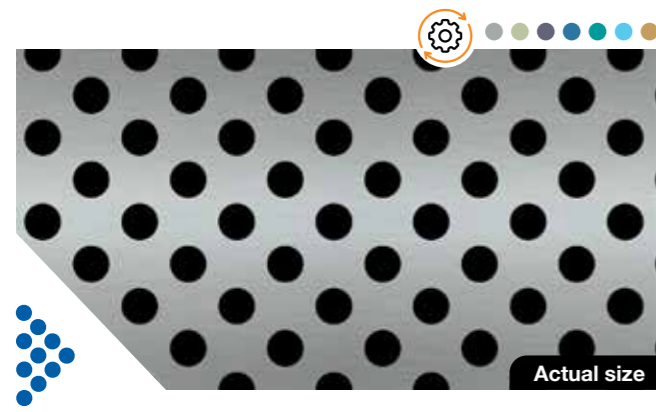
226 | Open area 51%
4.8mm diameter holes x 6.4mm staggered pitch



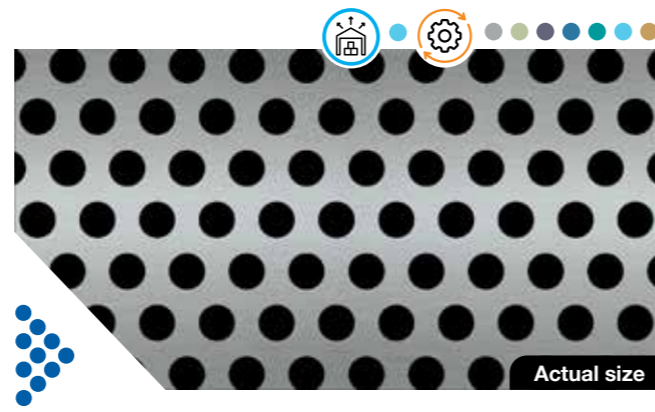
235 | Open area 23%
6.4mm diameter holes x 12.7mm staggered pitch



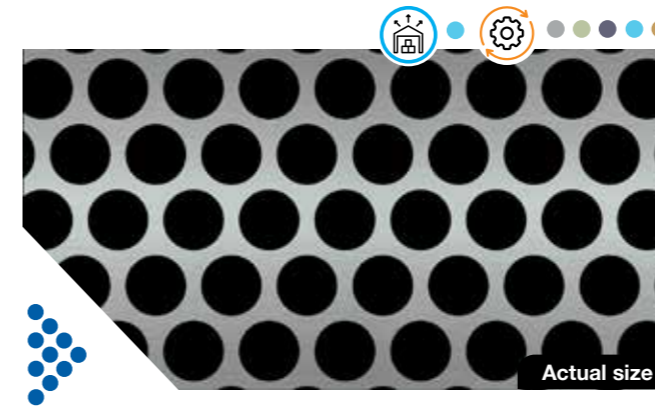
238 | Open area 62%
8.0mm diameter holes x 9.6mm staggered pitch



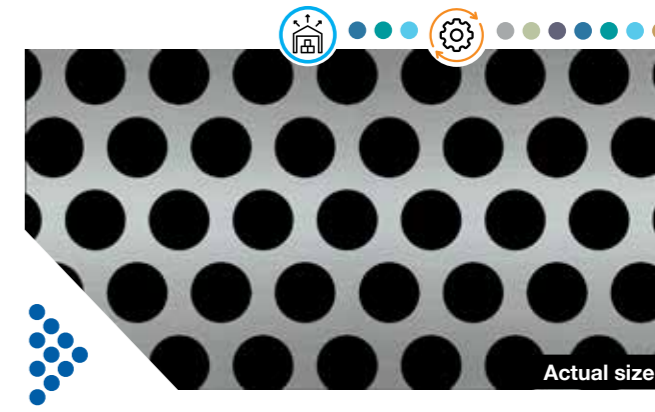
227 | Open area 25%
4.8mm diameter holes x 8.4mm diagonal pitch



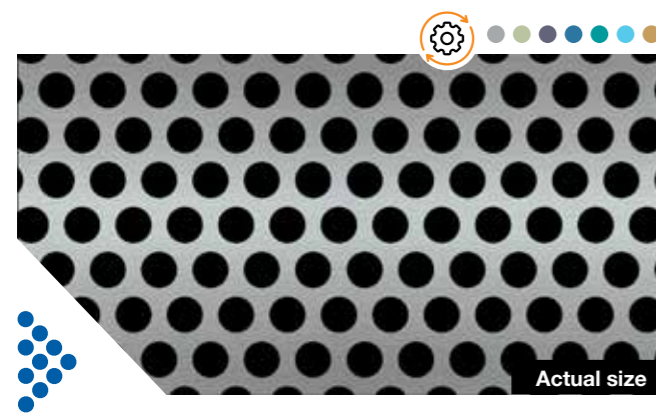
228 | Open area 33%
4.8mm diameter holes x 7.9mm staggered pitch



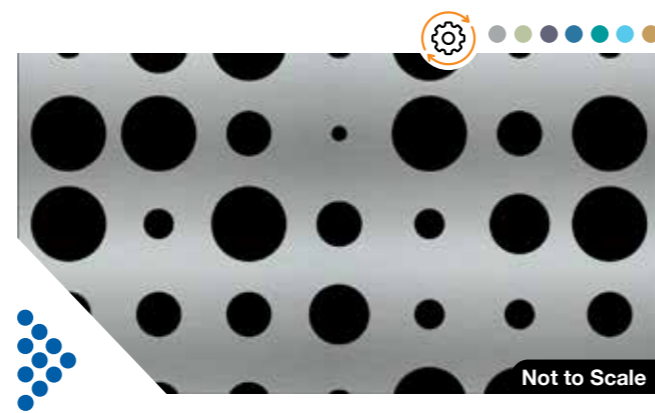
239 | Open area 58%
8.0mm diameter holes x 10.0mm staggered pitch



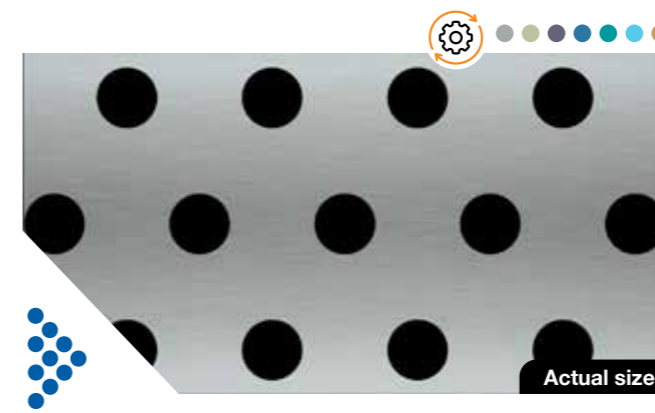
240 | Open area 47%
8.0mm diameter holes x 11.1mm staggered pitch



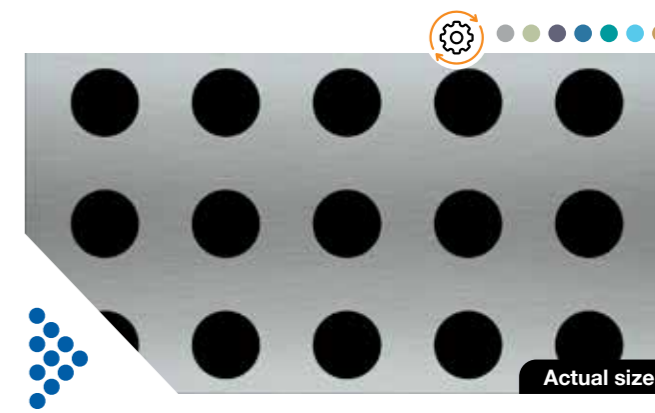
230 | Open area 44%
4.8mm diameter holes x 6.8mm staggered pitch



2319 | Open area 23%
5 size holes x 19.2mm straight pitch



241 | Open area 16%
8.0mm diameter holes x 19.2mm staggered pitch



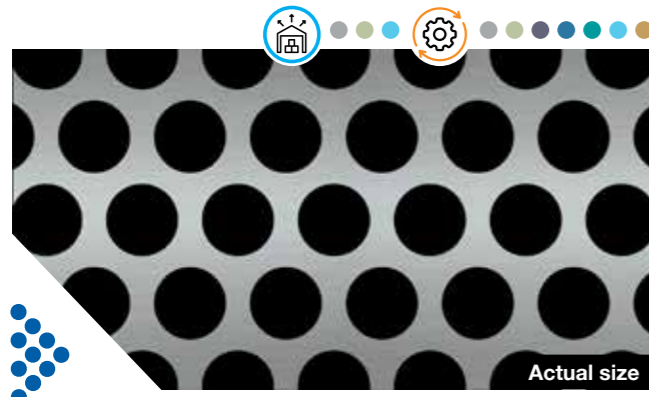
242 | Open area 25%
9.0mm diameter holes x 16.0mm straight pitch

Perforated Round holes

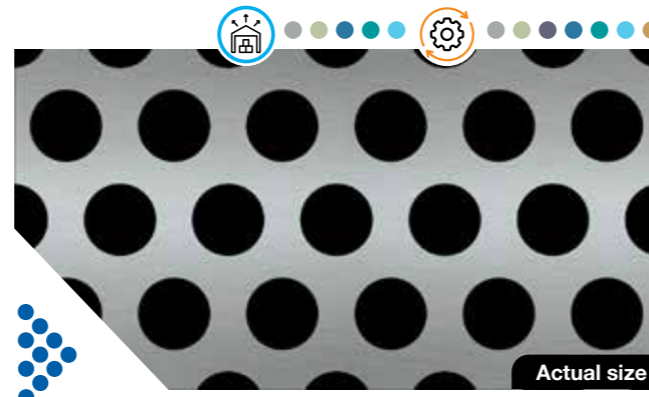
Perforated Round holes

Metals
 Mild Steel
 Aluminium Grade 5005
 Brass
 Pre-Galvanised Steel
 Galvanneal
 Stainless Steel Grade 304
 Stainless Steel Grade 316
 Stainless Steel Grade 304

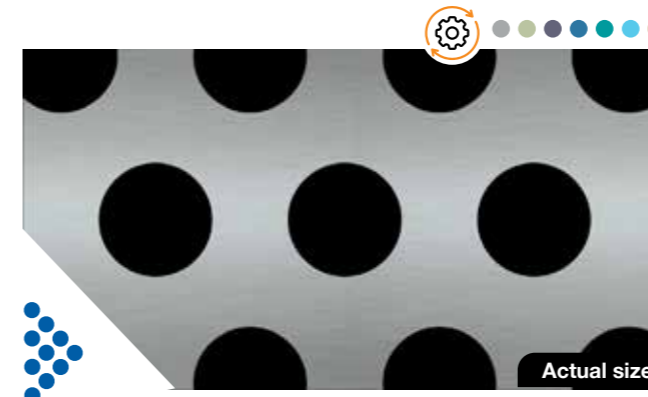
Metals
 Mild Steel
 Pre-Galvanised Steel
 Galvanneal
 Stainless Steel Grade 304
 Stainless Steel Grade 316
 Aluminium Grade 5005
 Brass



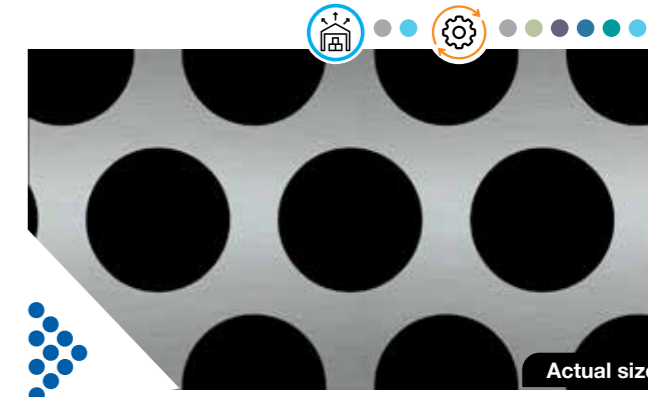
244 | Open area 51%
9.5mm diameter holes x 12.7mm staggered pitch



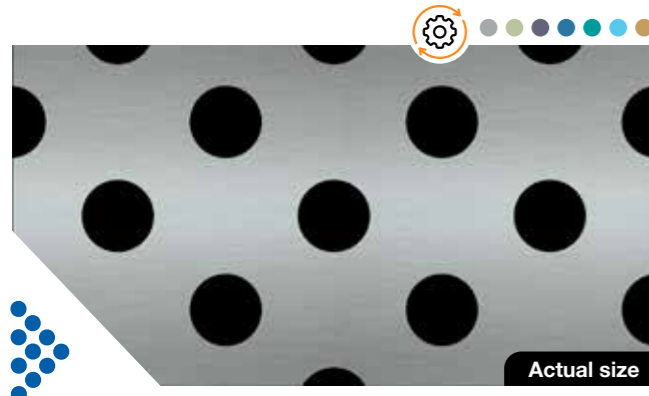
246 | Open area 40%
9.5mm diameter holes x 14.3mm staggered pitch



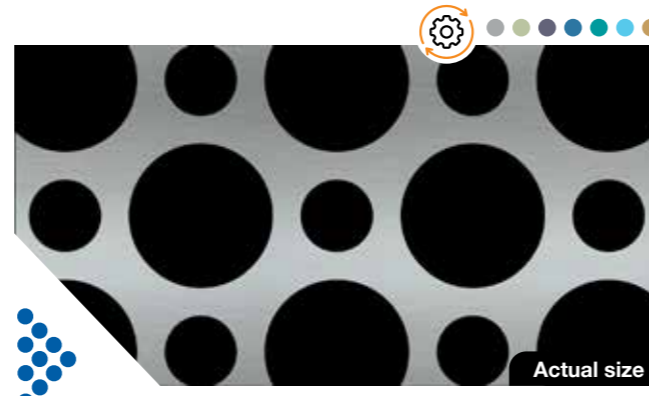
255 | Open area 33%
15.0mm diameter holes x 25.0mm staggered pitch



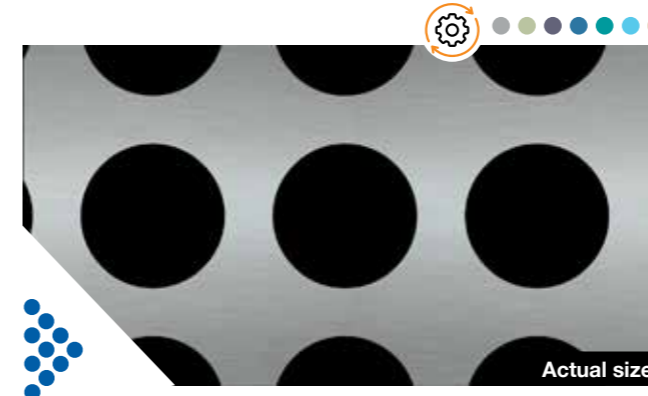
258 | Open area 51%
19.0mm diameter holes x 25.4mm staggered pitch



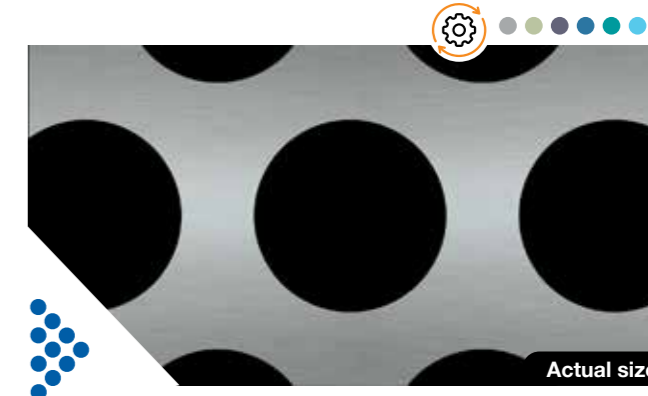
247 | Open area 20%
9.5mm diameter holes x 18.9mm diagonal pitch



2458 | Open area 55%
19.0mm & 9.5mm diameter holes x 25.4mm diagonal pitch



259 | Open area 44%
19.0mm diameter holes x 25.4mm straight pitch



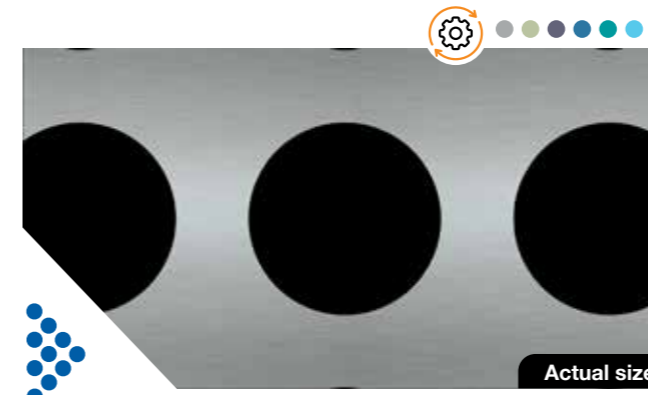
260 | Open area 48%
25.4mm diameter holes x 35.0mm staggered pitch



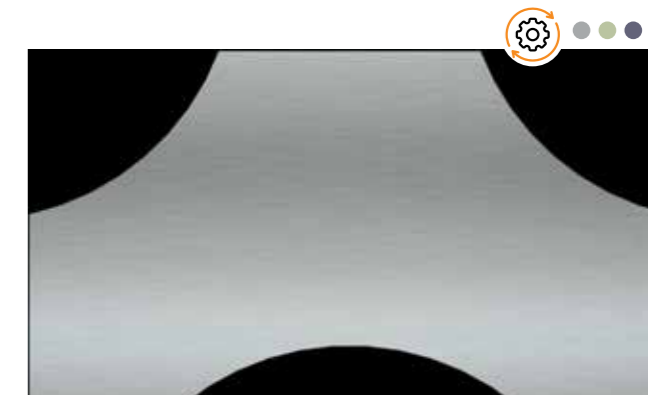
2459 | Open area 55%
19.0mm & 9.5mm diameter holes x 25.4mm straight pitch



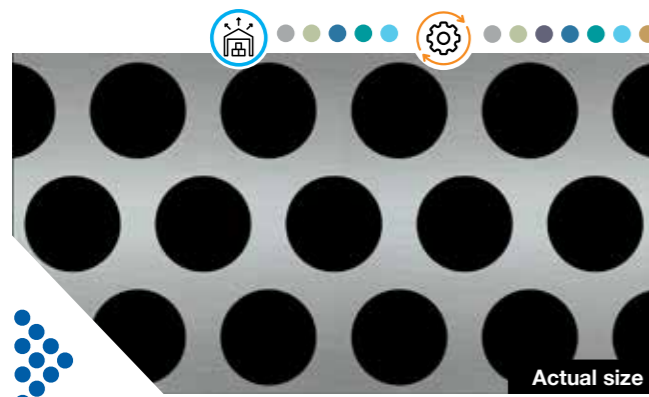
248 | Open area 40%
10.0mm diameter holes x 15.0mm staggered pitch



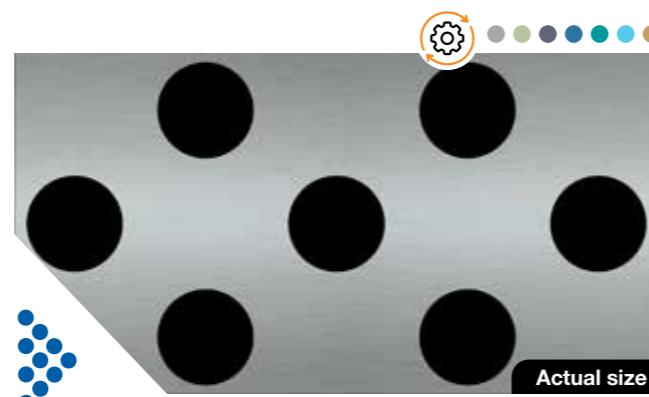
261 | Open area 41%
25.4mm diameter holes x 35.0mm straight pitch



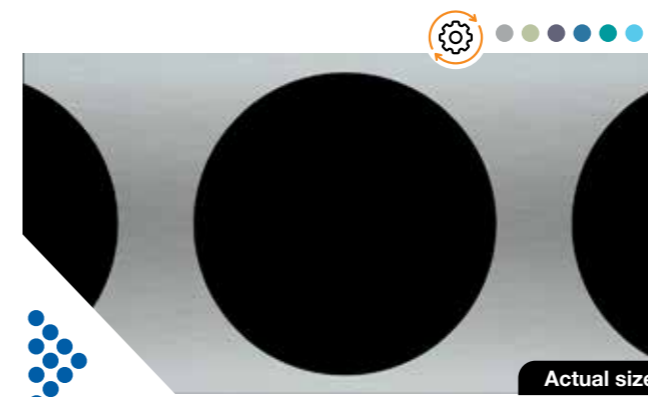
287 | Open area 44%
70.0mm diameter holes x 100.0mm staggered pitch



252 | Open area 49%
12.7mm diameter holes x 17.3mm staggered pitch



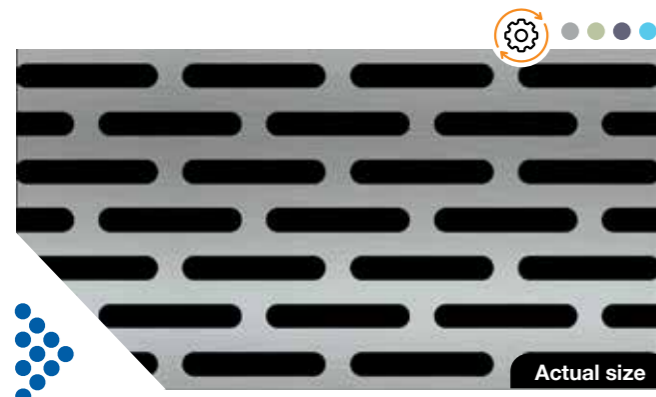
253 | Open area 24%
12.7mm diameter holes x 22.9mm diagonal pitch



284 | Open area 58%
40.0mm diameter holes x 50.0mm staggered pitch

Metals
 Mild Steel
 Pre-Galvanised Steel
 Galvanneal
 Stainless Steel Grade 304
 Stainless Steel Grade 316
 Aluminium Grade 5005
 Brass

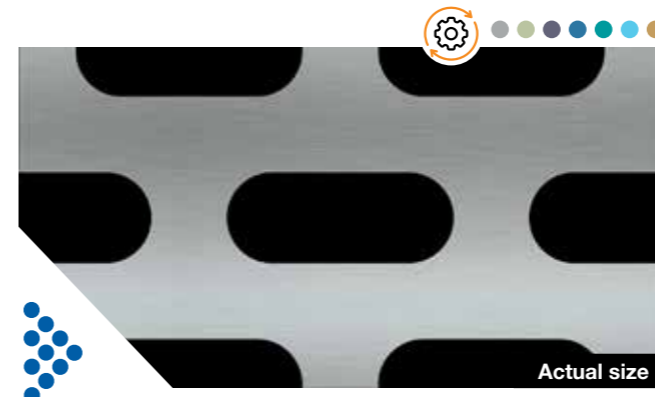
Metals
 Mild Steel
 Pre-Galvanised Steel
 Galvanneal
 Stainless Steel Grade 304
 Stainless Steel Grade 316
 Aluminium Grade 5005
 Brass



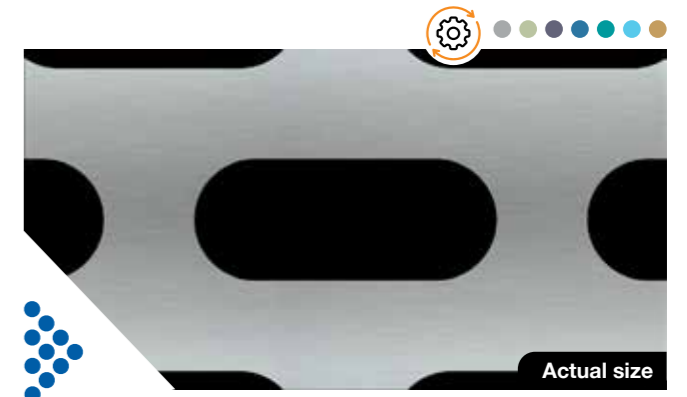
368 | Open area 41%
 Round slot 19.0mm x 3.2mm, staggered pitch



370 | Open area 40%
 Round slot 25.4mm x 4.8mm, staggered pitch



382 | Open area 37%
 Round slot 30.0mm x 12.0mm, staggered pitch



384 | Open area 40%
 Round slot 40.0mm x 16.0mm, staggered pitch



376 | Open area 45%
 Round slot 25.0mm x 7.0mm, staggered pitch



377 | Open area 45%
 Round slot 25.0mm x 7.0mm, straight pitch



391 | Open area 43%
 Rectangle 31.8mm x 6.4mm, staggered pitch



392 | Open area 43%
 Rectangle 52.0mm x 7.0mm, staggered pitch



378 | Open area 42%
 Round slot 52.0mm x 7.0mm, staggered pitch



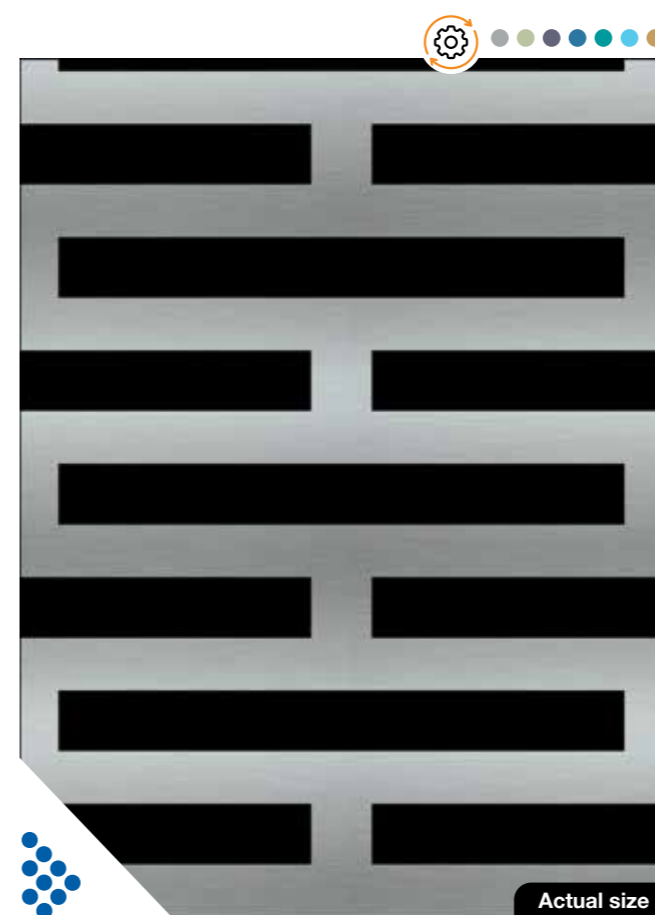
378A | Open area 60%
 Round slot 52.0mm x 7.0mm, staggered pitch



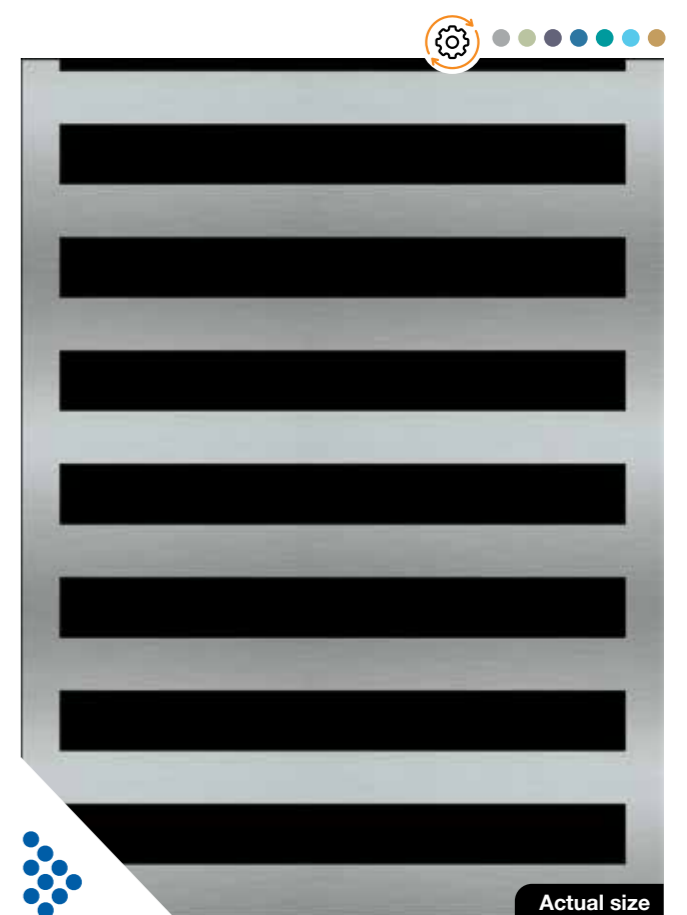
379 | Open area 42%
 Round slot 52.0mm x 7.0mm, straight pitch



380 | Open area 40%
 Round slot 20.0mm x 8.0mm, staggered pitch



396 | Open area 48%
 Rectangle 75.0mm x 8.0mm, staggered pitch



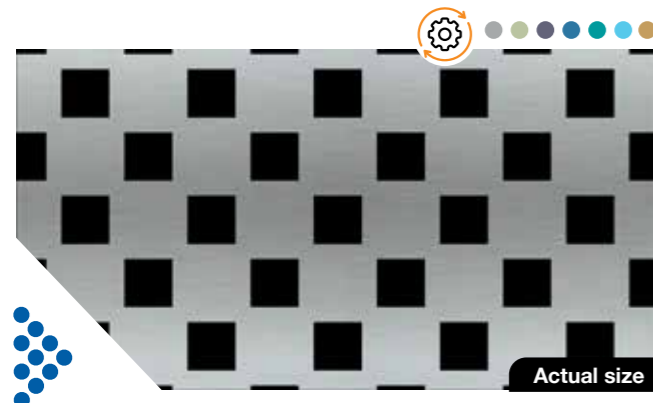
397 | Open area 48%
 Rectangle 75.0mm x 8.0mm, straight pitch

Perforated Square holes

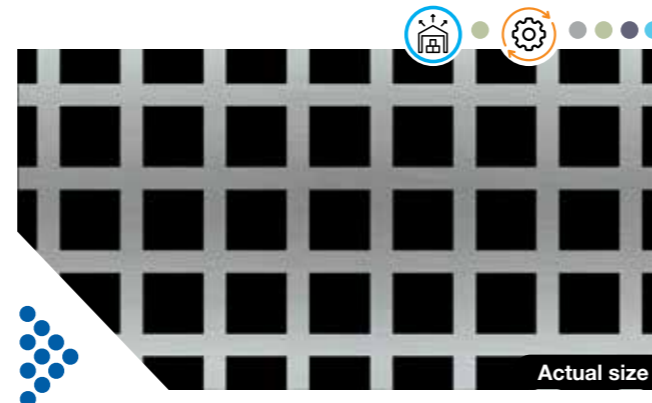
Perforated Square holes

Metals
 Mild Steel
 Pre-Galvanised Steel
 Galvanneal
 Stainless Steel Grade 304
 Stainless Steel Grade 316
 Aluminium Grade 5005
 Brass

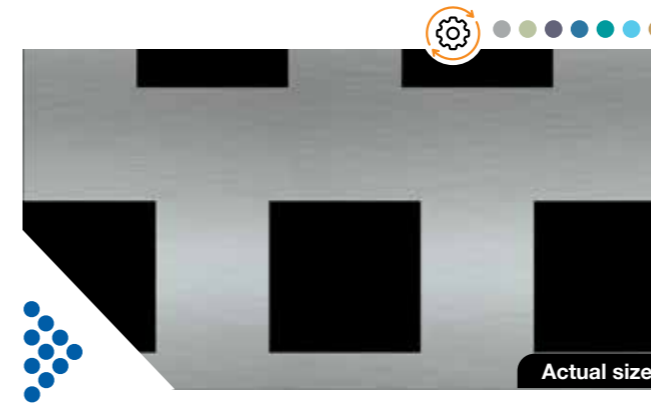
Metals
 Mild Steel
 Pre-Galvanised Steel
 Galvanneal
 Stainless Steel Grade 304
 Stainless Steel Grade 316
 Aluminium Grade 5005
 Brass



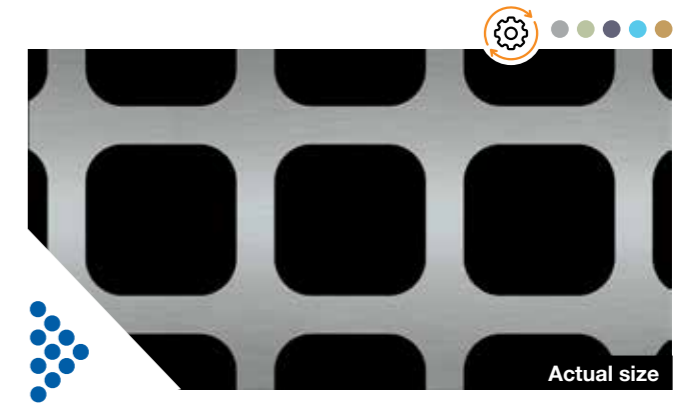
405 | Open area 29%
6.4mm square hole x 16.7mm staggered pitch



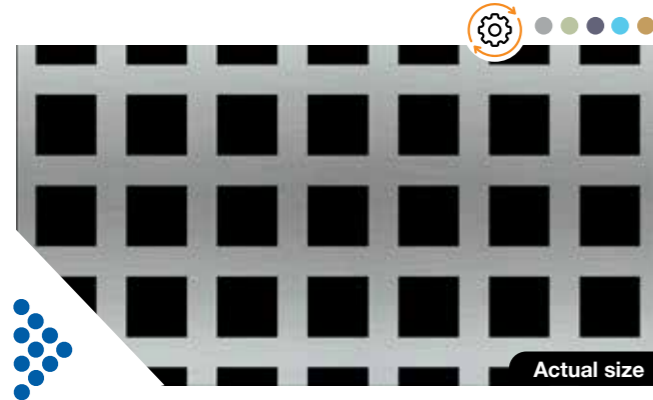
412 | Open area 53%
8.0mm square hole x 11.0mm straight pitch



433 | Open area 33%
20.0mm square hole x 35.0mm staggered pitch



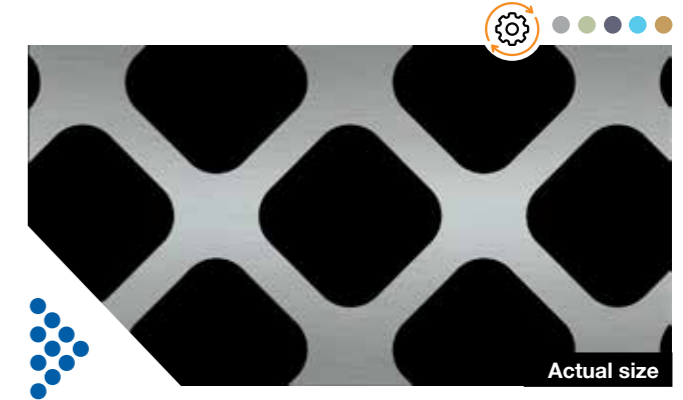
434 | Open area 60%
20.0mm radius corner square hole x 25.0mm straight pitch



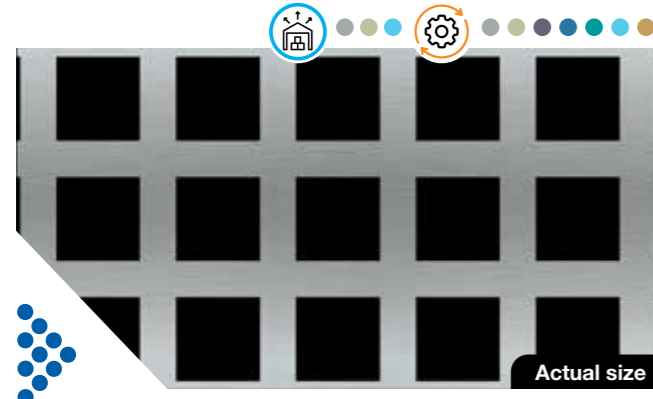
413 | Open area 44%
8.0mm square hole x 12.0mm straight pitch



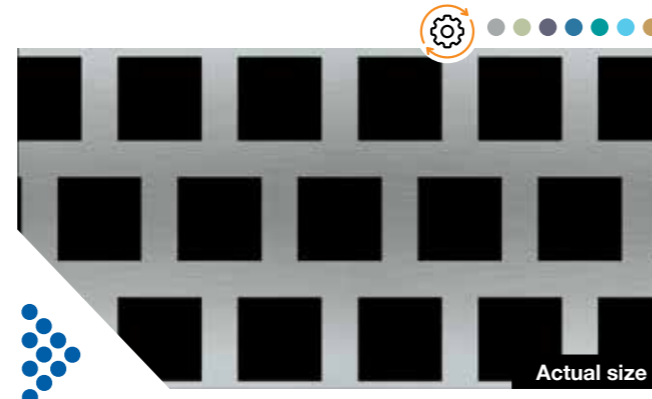
415 | Open area 44%
10.0mm square hole x 15.0mm straight pitch



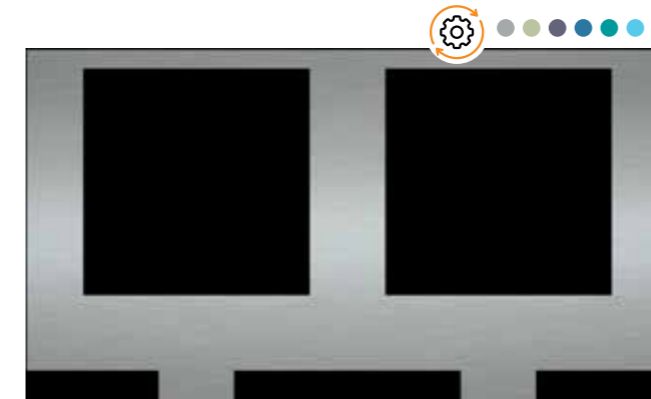
435 | Open area 60%
20.0mm radius corner square hole x 25.0mm diagonal pitch



418 | Open area 49%
11.1mm square hole x 15.9mm straight pitch



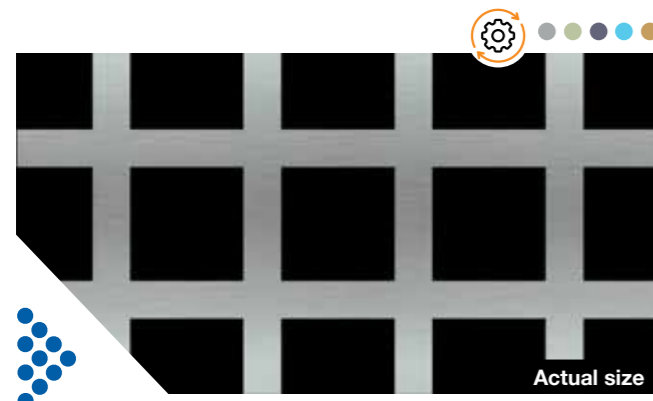
419 | Open area 49%
11.1mm square hole x 15.9mm staggered pitch



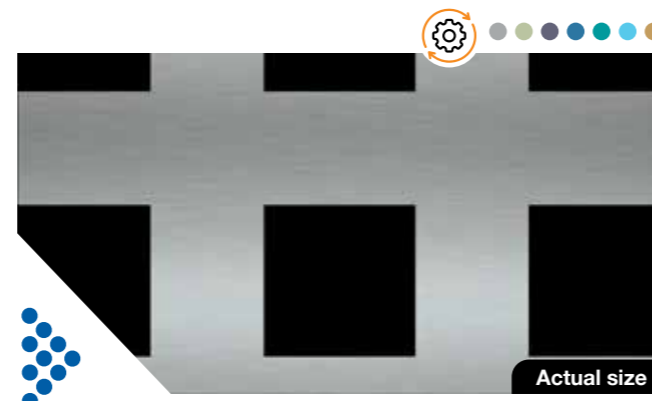
448 | Open area 56%
30.0mm square hole x 40.0mm staggered pitch



449 | Open area 56%
30.0mm square hole x 40.0mm diagonal pitch



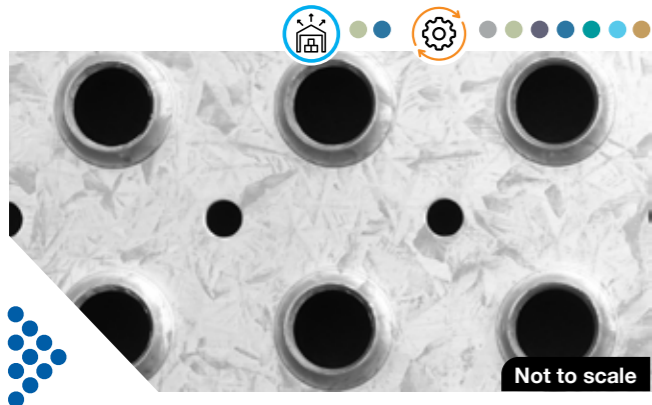
424 | Open area 56%
15.0mm square hole x 20.0mm straight pitch



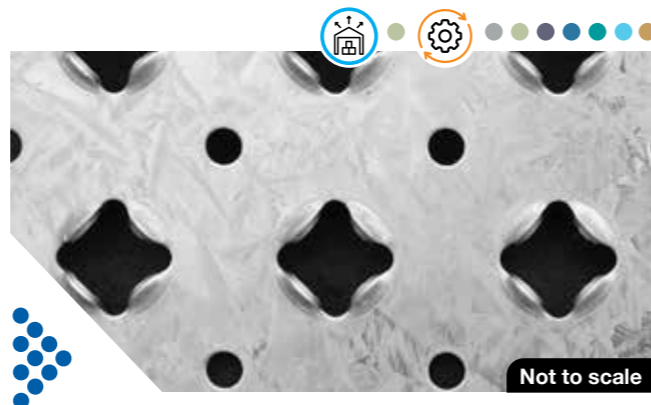
432 | Open area 33%
20.0mm square hole x 35.0mm straight pitch

Metals
● Mild Steel
● Pre-Galvanised Steel
● Galvanneal
● Stainless Steel Grade 304
● Stainless Steel Grade 316
● Aluminium Grade 5005
● Brass

Metals
● Mild Steel
● Pre-Galvanised Steel
● Galvanneal
● Stainless Steel Grade 304
● Stainless Steel Grade 316
● Aluminium Grade 5005
● Brass



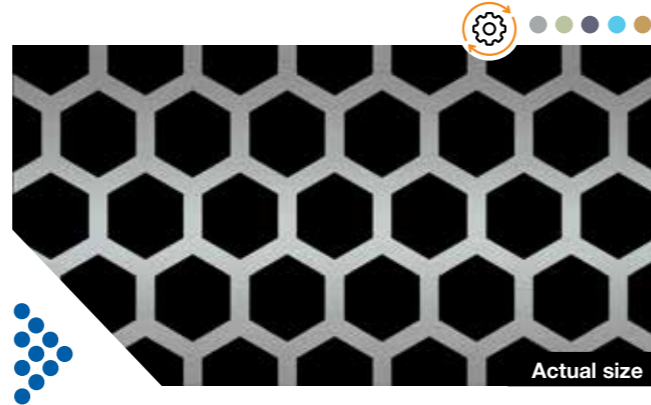
520 | Open area 11%
14.0mm diameter raised holes, 6.35mm diameter drain holes, 38.1mm straight pitch
Not to scale



524 | Open area 14%
20.0mm star raised holes, 6.35mm drain holes, 38.1mm straight pitch
Not to scale



545 | Open area 23%
20.0mm diameter raised holes, 14.0mm diameter drain holes, 45.0mm straight pitch
Not to scale



610 | Open area 64%
10.0mm hexagon hole x 12.5mm staggered pitch
Actual size



611 | Open area 32%
10.0mm hexagon hole x 25.0mm staggered pitch
Actual size



614 | Open area 60%
14.0mm hexagon hole x 18.0mm staggered pitch
Actual size



620 | Open area 39%
20.0mm hexagon hole x 32.0mm staggered pitch
Actual size



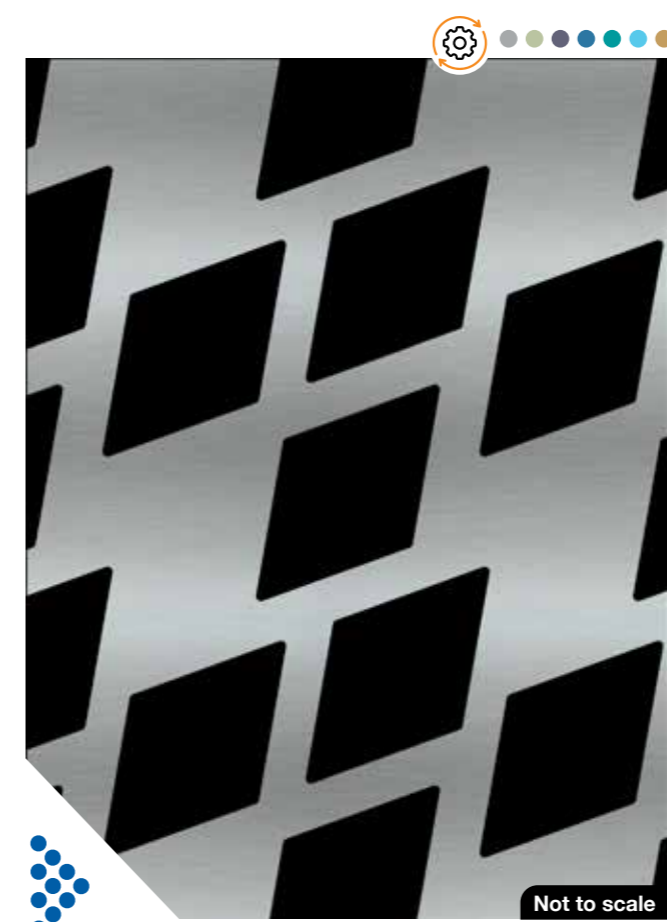
621 | Open area 51%
20.0mm hexagon hole x 28.0mm staggered pitch
Actual size



622 | Open area 64%
20.0mm hexagon hole x 25.0mm staggered pitch
Actual size



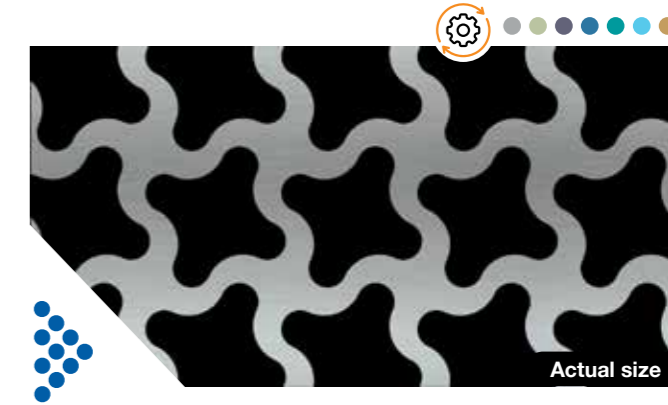
629 | Open area 72%
28.0mm hexagon hole x 33.0mm staggered pitch
Actual size



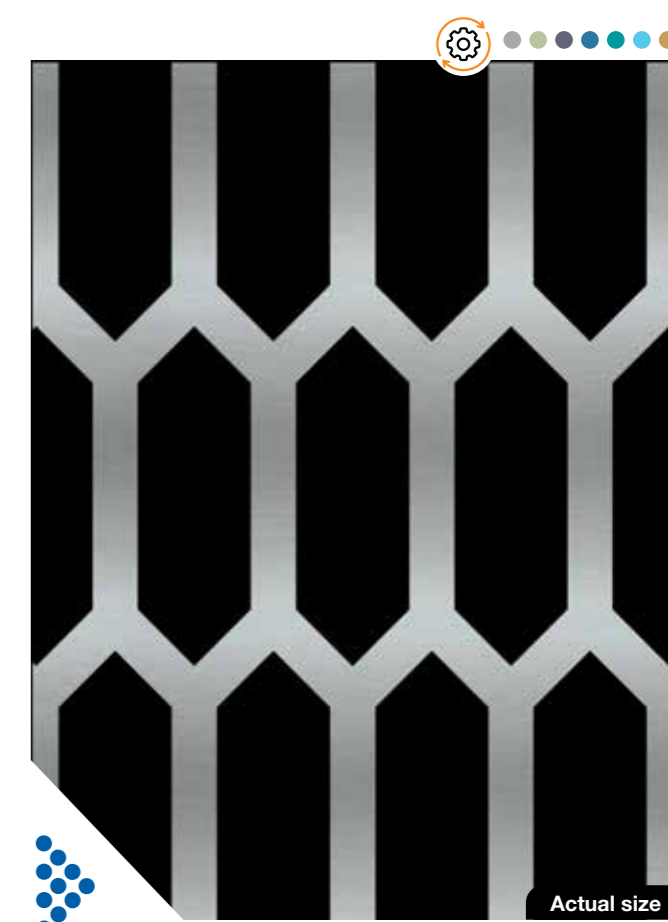
848 | Open area 48%
58.0mm x 35.0mm hole diamond shape
Not to scale



628 | Open area 54%
28.0mm hexagon hole x 38.0mm staggered pitch
Actual size



8423 | Open area 57%
20.0mm hole star shape
Actual size



8652 | Open area 62%
45.0mm x 15.0mm hole polygon shape
Actual size

Perforated Metal Specification

Perforated Round holes

 Manufactured-to-order
  In-stock Item

Descriptions			Mild Steel					Pre-Galvanised Steel					Galvanneal	Stainless Steel (Grade)						Aluminium			Brass							
														Grade 304			Grade 316			Grade 5005										
Pattern	Measurements, hole x pitch (mm)	% Open area	Thickness (mm)																											
			1.0	1.2	1.6	2.0	3.0	5.0	0.6	0.8	1.0	1.2	1.6	2.0	1.5	0.55	0.7	0.9	1.2	1.5	2.0	0.55	0.9	1.2	1.5	1.6	2.0	3.0	1.6	2.0
208	2.0 x 3.0 staggered	40%	●							●							●					●								
210	2.4 x 3.6 staggered	40%																								●				
214	2.4 x 6.8 staggered	11%								●	●							●												
218	3.2 x 4.8 staggered	40%	●		●							●	●						●	●				●	●	●	●			
220	3.2 x 5.6 staggered	30%			●					●	●		●						●	●			●		●	●	●			
222	3.2 x 9.6 staggered	10%		○	○							○	○					○							○	○	○			
223	4.0 x 4.8 staggered	62%		○								○													○					
224	4.0 x 12.0 staggered	10%		○	○							○	○							○					○	○	○			
225	4.0 x 6.0 staggered	40%		○	○							○	○												○	○	○			
226	4.8 x 6.4 staggered	51%	●	○	●				●		●	○	●						○	●			●		●	○	●			
227	4.8 x 8.4 diagonal	25%		○	○							○	○							○					○	○	○			
228	4.8 x 7.9 staggered	33%		○	○							○	○												○	○	○			
230	4.8 x 6.8 staggered	44%		○	○							○	○												○	○	○			
2319	5 sizes x 19.2 straight	23%		○	○							○	○							○					○	○	○			○
233	6.4 x 8.5 staggered	50%		○	○							○	○												○	○	○			
234	6.4 x 9.5 staggered	40%		○	●	○	●					○	○	○					○	●				○	○	○	○			○
235	6.4 x 12.7 staggered	23%		○	○	○						○	○	○											○	○	○			○
238	8.0 x 9.6 staggered	62%			●							●	●												○	○	○			
239	8.0 x 10.0 staggered	58%		○	○							○	○												○	○	○			○
240	8.0 x 11.1 staggered	47%		○	○							○	○							○	○				○	○	○			○
241	8.0 x 19.2 staggered	16%		○	○	○						○	○	○											○	○	○			○
242	9.0 x 16.0 straight	25%		○	○	○						○	○	○											○	○	○			○
244	9.5 x 12.7 staggered	51%		○	●							○	○							○					○	○	○			○
246	9.5 x 14.3 staggered	40%		○	●	○	●					○	○	○						○	○				○	○	○			○
247	9.5 x 18.9 diagonal	20%		○	○	○	○					○	○	○											○	○	○			○
2459	19.0 & 9.5 x 25.4 straight	55%		○	○							○	○												○	○	○			○
2458	19.0 & 9.5 x 25.4 diagonal	55%		○	○							○	○												○	○	○			○
248	10.0 x 15.0 staggered	40%		○	○	○						○	○	○											○	○	○			○
252	12.7 x 17.3 staggered	49%			●	○	●					○	○							○	○				○	○	○			○
253	12.7 x 22.9 diagonal	24%			○	○						○	○	○											○	○	○			○
255	15.0 x 25.0 staggered	33%			○	○	○					○	○	○											○	○	○			○
258	19.0 x 25.4 staggered	51%			○	○	○	○				○	○	○											○	○	○			○
259	19.0 x 25.4 straight	44%			○	○	○	○				○	○	○											○	○	○			○
260	25.4 x 35.0 staggered	48%			○	○	○	○				○	○	○											○	○	○			○
261	25.4 x 35.0 straight	41%			○	○	○	○				○	○	○											○	○	○			○
284	40.0 x 50.0 staggered	58%			○	○	○	○				○	○	○											○	○	○			○
287	70.0 x 100.0 staggered	44%			○							○													○	○	○			○

Perforated Slotted holes

 Manufactured-to-order
  In-stock Item

Descriptions			Mild Steel					Pre-Galvanised Steel					Galvanneal	Stainless Steel (Grade)						Aluminium			Brass													
Pattern	Measurements, slot W (mm) x H (mm), pitch	% Open area	Thickness (mm)																																	
			1.0	1.2	1.6	2.0	3.0	5.0	0.6	0.8	1.0	1.2	1.6	2.0	1.5	0.55	0.7	0.9	1.2	1.5	2.0	0.55	0.9	1.2	1.5	1.6	2.0	3.0	1.6	2.0						
368 round slot	19.0 x 3.2, staggered	41%		○								○																			○	○				
370 round slot	25.4 x 4.8, staggered	40%		○	○							○	○								○									○	○	○		○		
376 round slot	25.0 x 7.0, staggered	45%		○	○							○	○								○									○	○	○		○	○	
377 round slot	25.0 x 7.0, straight	45%		○	○							○	○								○									○	○	○		○	○	
378 round slot	52.0 x 7.0, staggered	42%			○								○								○									○	○	○		○	○	
378A round slot	52.0 x 7.0, staggered	60%																												○	○					
379 round slot	52.0 x 7.0, straight	42%			○								○								○									○	○	○		○	○	
380 round slot	20.0 x 8.0, staggered	40%			○	○							○	○							○									○	○	○		○	○	
382 round slot	30.0 x 12.0, staggered	37%			○	○	○						○	○							○	○								○	○	○		○	○	
384 round slot	40.0 x 16.0, staggered	40%			○	○	○						○	○							○	○								○	○	○		○	○	
391 rectangle	31.8 x 6.4, staggered	43%			○								○								○									○	○	○		○	○	
392 rectangle	52.0 x 7.0, staggered	43%			○								○								○									○	○	○		○	○	
396 rectangle	75.0 x 8.0, staggered	48%			○								○								○									○	○	○		○	○	
397 rectangle	75.0 x 8.0, straight	48%			○								○								○									○	○	○		○	○	

Perforated Square holes

Descriptions			Mild Steel					Pre-Galvanised Steel					Galvanneal	Stainless Steel (Grade)						Aluminium			Brass												
Pattern	Measurements, hole x pitch (mm)	% Open area	Thickness (mm)																																
			1.0	1.2	1.6	2.0	3.0	5.0	0.6	0.8	1.0	1.2	1.6	2.0	1.5	0.55	0.7	0.9	1.2	1.5	2.0	0.55	0.9	1.2	1.5	1.6	2.0	3.0	1.6	2.0					
405	6.4 x 16.7 staggered	29%		○	○							○	○								○									○	○	○		○	
412	8.0 x 11.0 straight	53%		○	○							○	○																	○	○	○		○	
413	8.0 x 12.0 straight	44%		○	○							○	○																	○	○	○		○	
415	10.0 x 15.0 straight	44%		○	○	○						○	○	○								○								○	○	○		○	○
418	11.1 x 15.9 straight	49%		○	○							○	○								○									○	○	○		○	
419	11.1 x 15.9 staggered	49%		○	○							○	○								○									○	○	○		○	
424	15.0 x 20.0 straight	56%		○	○							○	○																	○	○	○		○	
432	20.0 x 35.0 straight	33%			○	○							○	○								○								○	○	○		○	○
433	20.0 x 35.0 staggered	33%			○	○							○	○								○								○	○	○		○	○
434 radius cnrs	20.0 x 25.0 straight	60%			○								○																	○	○	○		○	
435 radius cnrs	20.0 x 25.0 diagonal	60%			○								○																	○	○	○		○	
448	30.0 x 40.0 staggered	56%			○								○									○								○	○	○		○	
449	30.0 x 40.0 diagonal	56%			○								○																	○	○	○		○	

Perforated Raised holes 3D

Manufactured-to-order ● In-stock Item

Descriptions			Mild Steel					Pre-Galvanised Steel					Galvanneal	Stainless Steel (Grade)						Aluminium			Brass									
														Grade 304			Grade 316			Grade 5005												
Pattern	Measurements, hole x pitch (mm)	% Open area	Thickness (mm)																													
			1.0	1.2	1.6	2.0	2.5	3.0	0.6	0.8	1.2	1.6	2.0	2.5	1.5	0.55	0.7	0.9	1.2	1.5	2.0	0.55	1.2	1.5	2.0	1.6	2.0	3.0	1.6	2.0		
520	14mm diameter raised holes, 6.35mm diameter drain holes, 38.1mm straight pitch	11%			○	○						○	○	●	○						○	○			○	○	○	○	○	○	○	○
524	20mm star raised holes, 6.35mm drain holes, 38.1 mm straight pitch	14%			○	○	○					○	○	○	○						○	○			○	○	○	○	○	○	○	○
545	20mm diameter raised holes, 14mm diameter drain holes, 45mm straight pitch	23%			○	○						○	○		○						○	○			○	○	○	○	○	○	○	○

Perforated Hexagon holes

Descriptions			Mild Steel					Pre-Galvanised Steel					Galvanneal	Stainless Steel (Grade)						Aluminium			Brass									
														Grade 304			Grade 316			Grade 5005												
Pattern	Measurements, hole x pitch (mm)	% Open area	Thickness (mm)																													
			1.0	1.2	1.6	2.0	2.5	3.0	0.6	0.8	1.0	1.2	1.6	2.0	1.5	0.55	0.7	0.9	1.2	1.5	2.0	0.55	0.9	1.2	1.5	1.6	2.0	3.0	1.6	2.0		
610	10.0 x 12.5 staggered	64%		○	○							○	○		○												○	○	○	○	○	○
611	10.0 x 25.0 staggered	32%		○	○							○	○		○												○	○	○	○	○	○
614	14.0 x 18.0 staggered	60%		○	○							○	○		○												○	○	○	○	○	○
620	20.0 x 32.0 staggered	39%		○	○	○						○	○	○	○						○	○			○	○	○	○	○	○	○	○
621	20.0 x 28.0 staggered	51%		○	○	○						○	○	○	○						○				○		○	○	○	○	○	○
622	20.0 x 25.0 staggered	64%		○	○							○	○		○												○	○	○	○	○	○
628	28.0 x 38.0 staggered	54%			○	○						○	○		○						○	○			○	○	○	○	○	○	○	○
629	28.0 x 33.0 staggered	72%			○							○			○												○	○	○	○	○	○

Perforated Impact collection

Descriptions			Mild Steel					Pre-Galvanised Steel					Galvanneal	Stainless Steel (Grade)						Aluminium			Brass									
														Grade 304			Grade 316			Grade 5005												
Pattern	Measurements, hole x pitch (mm)	% Open area	Thickness (mm)																													
			1.0	1.2	1.6	2.0	2.5	3.0	0.6	0.8	1.0	1.2	1.6	2.0	1.5	0.55	0.7	0.9	1.2	1.5	2.0	0.55	0.9	1.2	1.5	1.6	2.0	3.0	1.6	2.0		
8423	20.0 star	57%		○	○							○	○		○						○				○		○	○	○	○	○	○
848	58.0 x 35.0 diamond	48%			○	○						○	○		○						○	○			○	○	○	○	○	○	○	○
8652	45.0 x 15.0 polygon	62%			○							○			○						○				○		○	○	○	○	○	○



3D

PERFORATED METAL SPECIFICATION - Perforated Raised, Hexagon & Impact Holes



HOW TO ORDER

Explore perforated metal possibilities for your projects with Arrow Metal.

To make an enquiry, or to talk through your design ideas, get in touch with us:

Call: (02) 9748 2200

Email: sales@arrowmetal.com.au

WHY ARROW METAL?

- Extensive choice of standard and architectural designs
- Fast lead times
- Australia-wide shipping
- Bespoke perforated metal design service
- Project advice & guidance
- Australian-owned and operated
- Exceptional quality standards

www.arrowmetal.com.au 

arrowmetal

Arrow Metal Pty Ltd

3 Carolyn St, Silverwater NSW 2128
Australia

+61 2 9748 2200 (phone)

+61 2 9748 2210 (fax)

sales@arrowmetal.com.au

www.arrowmetal.com.au

